

Femelle DIN
Female DIN

(DIN 11864-1 forme B)

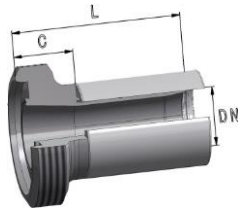
(*) **matière / material**
E EPDM
N NITRILE
S SILICONE
V FKM
T PTFE

Côtes DIN / DIN dimensions

DN	DN connexion	Dimensions (mm)			Filetages / Threads	Ecrrous / Nuts	Joints / Seals
		L	C	D			
3/8"	10	DIN 10	42,0	17,0	38,0	Rd 28x1/8"	754 44 02 756 6002 (*)
1/2"	13	DIN 10	45,0	17,0	38,0	Rd 28x1/8"	754 44 02 756 6002 (*)
5/8"	16	DIN 15	46,0	18,0	44,0	Rd 34x1/8"	754 44 04 756 6004 (*)
3/4"	20	DIN 20	56,0	21,0	54,0	Rd 44x1/6"	754 44 06 756 6006 (*)
1"	25	DIN 25	58,5	22,0	63,0	Rd 52x1/6"	754 44 08 756 6008 (*)
1"1/4"	32	DIN 32	58,5	22,0	70,0	Rd 58x1/6"	754 44 10 756 6010 (*)
1"1/2"	38	DIN 40	60,0	22,0	78,0	Rd 65x1/6"	754 44 12 756 6012 (*)
2"	50	DIN 50	69,0	24,0	92,0	Rd 78x1/6"	754 44 14 756 6014 (*)
2"1/2"	63	DIN 65	88,0	32,0	112,0	Rd 95x1/6"	754 44 16 756 6016 (*)
3"	76	DIN 80	88,0	32,0	127,0	Rd110x1/4"	754 44 18 756 6018 (*)

Côtes ASME / ASME dimensions

DN	DN connexion	Dimensions (mm)			Filetages / Threads	Ecrrous / Nuts	Joints / Seals
		L	C	D			
1"	25	DIN 1"	58,5	22,0	63,0	Rd 52x1/6"	754 4408 756 5708 (*)
1"1/2"	38	DIN 1"1/2"	60,0	22,0	78,0	Rd 65x1/6"	754 4412 756 5712 (*)
2"	50	DIN 2"	69,0	24,0	92,0	Rd 78x1/6"	754 4414 756 5714 (*)
2"1/2"	63	DIN 2"1/2"	88,0	32,0	112,0	Rd 95x1/6"	754 4416 756 5716 (*)
3"	76	DIN 3"	88,0	32,0	127,0	Rd110x1/4"	754 4418 756 5718 (*)
4"	100	DIN 4"	100,0	44,0	148,0	Rd130x1/4"	754 4420 756 5720 (*)



Mâle DIN
Male DIN

(DIN 11864-1 forme B)

Côtes DIN / DIN dimensions

DN	DN connexion	Dimensions (mm)		Filetages / Threads	
		L	C		
3/8"	10	DIN 10	40,5	15,5	Rd 28x1/8"
1/2"	13	DIN 10	43,5	15,5	Rd 28x1/8"
5/8"	16	DIN 15	44,0	16,0	Rd 34x1/8"
3/4"	20	DIN 20	54,0	19,0	Rd 44x1/6"
1"	25	DIN 25	55,5	19,0	Rd 52x1/6"
1"1/4"	32	DIN 32	57,5	21,0	Rd 58x1/6"
1"1/2"	38	DIN 40	58,0	20,0	Rd 65x1/6"
2"	50	DIN 50	66,0	21,0	Rd 78x1/6"
2"1/2"	63	DIN 65	79,0	23,0	Rd 95x1/6"
3"	76	DIN 80	82,5	26,5	Rd110x1/4"

Côtes ASME / ASME dimensions

DN	DN connexion	Dimensions (mm)		Filetages / Threads	
		L	C		
1"	25	DIN 1"	55,5	19,0	Rd 52x1/6"
1"1/2"	38	DIN 1"1/2"	58,0	20,0	Rd 65x1/6"
2"	50	DIN 2"	66,0	21,0	Rd 78x1/6"
2"1/2"	63	DIN 2"1/2"	79,0	23,0	Rd 95x1/6"
3"	76	DIN 3"	82,5	26,5	Rd110x1/4"
4"	100	DIN 4"	82,5	26,5	Rd130x1/4"

(C) : Références avec embout rallongé pour montage coquille, dimension L différente
Reference with longer nipples for reusable ferrules assembly, L dimension differs

La forme et la dimension des pièces sont données à titre indicatif, elles peuvent être modifiées sans préavis.
The shape and the dimensions of the items are purely indicative, they can change without notice.